

## Technical Characteristics

Electrical	Impedance	50Ω	
	Frequency Range	0-18GHz	
	DWV	1000VRMS max.	
VSWR	Straight	1.3 max.	
	Right Angle	1.5 max.	
Resistance	Contact	Center	≤ 5milliΩ
		Outer	≤ 1milliΩ
	Insulator	≥ 5000megaΩ	

### 19-01F-TGN



SMA Male Clamp, Teflon Insulation, Gold Plated Pin, Nickel Plated Body, for TCC Cable Group F

### 19-01L-TGG



SMA Male Clamp, Teflon Insulation, Gold Plated Pin, Gold Plated Body, for TCC Cable Group L

### 19-02F-E-TGN



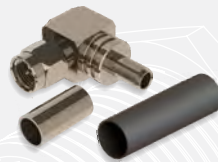
SMA Male Crimp, Teflon Insulation, Gold Pin, Nickel Plated Body, Right Angle, Solderless for TCC Group F

### 19-02FL1-TGN



SMA Male Crimp, Teflon Insulation, Gold Plated Pin, Nickel Plated Body, Right Angle, for TCC Cable Group F and L1

### 19-02F-E-HS-TGN



SMA Male Crimp, Teflon Insulation, Gold Pin, Nickel Plated Body, Right Angle, Solderless with Heat Shrink Tube (20-HST-9.5) for TCC Group F

### 19-02K-TGG



SMA Male Crimp, Teflon Insulation, Gold Plated Pin, Nickel Plated Body, Right Angle, for TCC Cable Group K

### 19-02L-6-TGN



SMA Male Crimp, Teflon Insulation, Gold Plated Pin, Nickel Plated Body, Right Angle, for TCC Cable Group L

### 19-02L-RP-TGG



SMA Male Crimp, Teflon Insulation, Gold Plated Pin, Gold Plated Body, Right Angle, Reverse Polarity, for TCC Cable Group L

### 19-02L2-E-TGN



SMA Male Crimp, Teflon Insulation, Gold Pin, Nickel Plated Body, Right Angle, Solderless for TCC Group L2

### 19-02L2-E-HS-TGN



SMA Male Crimp, Teflon Insulation, Gold Pin, Nickel Plated Body, Right Angle, Solderless with Heat Shrink Tube (20-HST-9.5) for TCC Group L2

### 19-03C-TGN



SMA Male Crimp, Teflon Insulation, Gold Plated Pin, Nickel Plated Body, for TCC Cable Group C

### 19-03F-E-TGN



SMA Male Crimp, Teflon Insulation, Gold Pin, Nickel Plated Body, Solderless, for TCC Cable Group F

# 19 SERIES

# SMA

## 19-03F-TGG



SMA Male Crimp,  
Teflon Insulation,  
Gold Plated Pin,  
Gold Plated Body,  
for TCC Cable Group  
F

## 19-03F-TGN



SMA Male Crimp,  
Teflon Insulation,  
Gold Plated Pin,  
Nickel Plated Body,  
for TCC Cable Group  
F

## 19-03F-R-TGN



SMA Male Crimp,  
Teflon Insulation,  
Gold Plated Pin,  
Nickel Plated Body,  
Reverse Thread, for  
TCC Cable Group F

## 19-03F-RP-TGG



SMA Male Crimp,  
Teflon Insulation,  
Gold Plated Pin,  
Nickel Plated Body,  
Reverse Polarity, for  
TCC Cable Group F

## 19-03F-RP-TGN



SMA Male Crimp,  
Teflon Insulation,  
Gold Plated Pin,  
Nickel Plated Body,  
Reverse Polarity for  
TCC Cable Group F

## 19-03K-TGN



SMA Male Crimp,  
Teflon Insulation,  
Gold Plated Pin,  
Nickel Plated Body,  
for TCC Cable Group  
K

## 19-03L-TGN



SMA Male Crimp,  
Teflon Insulation,  
Gold Plated Pin,  
Nickel Plated Body,  
for TCC Cable Group  
L

## 19-03L-9-TGG



SMA Male Crimp,  
Teflon Insulation,  
Gold Plated Pin,  
Gold Plated Body,  
for TCC Cable Group  
L

## 19-03L-RP-TGG



SMA Male Crimp,  
Teflon Insulation,  
Gold Plated Pin,  
Gold Plated Body,  
Reverse Polarity, for  
TCC Cable Group L

## 19-03L-RP-TGN



SMA Male Crimp,  
Teflon Insulation,  
Gold Plated Pin,  
Nickel Plated Body,  
Reverse Polarity, for  
TCC Cable Group L

## 19-03L1-TGN



SMA Male Crimp,  
Teflon Insulation,  
Gold Plated Pin,  
Nickel Plated Body,  
for TCC Cable Group  
L1

## 19-03L1-E-TGN



SMA Male Crimp,  
Teflon Insulation,  
Gold Pin, Nickel  
Plated Body,  
Solderless, for TCC  
Cable Group L1

## 19-03L1-E-HS-TGN



SMA Male Crimp,  
Teflon Insulation,  
Gold Pin, Nickel  
Plated Body,  
Solderless with Heat  
Shrink Tube (20-HST-  
9.5) for TCC Cable  
Group L1

## 19-03L1-R-TGN



SMA Male Crimp,  
Teflon Insulation,  
Gold Plated Pin,  
Nickel Plated Body,  
Reverse Thread, for  
TCC Cable Group L1

## 19-03L1-RP-TGN



SMA Male Crimp,  
Teflon Insulation,  
Gold Plated Pin,  
Nickel Plated Body,  
Reverse Polarity, for  
TCC Cable Group L1

## 19-03L1-RP-TGG



SMA Male Crimp,  
Teflon Insulation,  
Gold Plated Pin,  
Gold Plated Body,  
Reverse Polarity, for  
TCC Cable Group L1

## 19-03L2-9-TGG



SMA Male Crimp,  
Teflon Insulation,  
Gold Plated Pin,  
Gold Plated Body,  
for TCC Cable Group  
L2

## 19-03L2-R-TGN



SMA Male Crimp,  
Teflon Insulation,  
Gold Plated Pin,  
Nickel Plated Body,  
Reverse Thread, for  
TCC Cable Group L2

# SMA

# 19 SERIES

## 19-03L2-E-TGN



SMA Male Crimp, Teflon Insulation, Gold Pin, Nickel Plated Body, Solderless, for TCC Cable Group L2

## 19-03L2-E-HS-TGN



SMA Male Crimp, Teflon Insulation, Gold Pin, Nickel Plated Body, Solderless with Heat Shrink Tube (20-HST-9.5), for TCC Cable Group L2

## 19-03L2-RP-TGG



SMA Male Crimp, Teflon Insulation, Gold Plated Pin, Gold Plated Body, Reverse Polarity, for TCC Cable Group L2

## 19-03L2-TGN



SMA Male Crimp, Teflon Insulation, Gold Plated Pin, Nickel Plated Body, for TCC Cable Group L2

## 19-03L3-TGN



SMA Male Crimp, Teflon Insulation, Gold Plated Pin, Nickel Plated Body, for TCC Cable Group L3

## 19-03S1-TGG



SMA Male Semi-Rigid, Teflon Insulation, Gold Plated Pin, Gold Plated Body, for TCC Cable Group S1

## 19-03S1-TGN



SMA Male Semi-Rigid, Teflon Insulation, Gold Plated Pin, Nickel Plated Body, for TCC Cable Group S1

## 19-03S2-TGN



SMA Male Semi-Rigid, Teflon Insulation, Gold Plated Pin, Nickel Plated Body, for TCC Cable Group S2

## 19-03T-TGN



SMA Male Crimp, Teflon Insulation, Gold Plated Pin, Nickel Plated Body, for TCC Cable Group T

## 19-03T-RP-TGN



SMA Male Crimp, Teflon Insulation, Gold Plated Pin, Nickel Plated Body, Reverse Polarity, for TCC Cable Group T

## 19-04L-TGN



SMA Female Bulk-head Crimp, Teflon Insulation, Gold Plated Pin, Nickel Plated Body, for TCC Cable Group L

## 19-05F-1-TGN



SMA Female Crimp, Teflon Insulation, Gold Plated Pin, Nickel Plated Body, for TCC Cable Group F

## 19-05F-9-RP-TGG



SMA Female Bulk-head Crimp, Teflon Insulation, Gold Plated Pin, Gold Plated Body, Reverse Polarity, for TCC Cable Group F

## 19-05F-9-TGG



SMA Female Bulk-head Crimp, Teflon Insulation, Gold Plated Pin, Gold Plated Body, for TCC Cable Group F

## 19-05F-RP-TGG



SMA Female Crimp, Teflon Insulation, Gold Plated Pin, Gold Plated Body, Reverse Polarity, for TCC Cable Group F

## 19-05F-RP-TGN



SMA Female Crimp, Teflon Insulation, Gold Plated Pin, Nickel Plated Body, Reverse Polarity, for TCC Cable Group F

## 19-05K-TGN



SMA Female Crimp, Teflon Insulation, Gold Plated Pin, Nickel Plated Body, for TCC Cable Group K

## 19-05L-TGN



SMA Female Crimp, Teflon Insulation, Gold Plated Pin, Nickel Plated Body, for TCC Cable Group L

# 19 SERIES

# SMA

## 19-05L1-RP-TGN



SMA Female Crimp, Teflon Insulation, Gold Plated Pin, Nickel Plated Body, Reverse Polarity, for TCC Cable Group L1

## 19-05L1-TGN



SMA Female Crimp, Teflon Insulation, Gold Plated Pin, Nickel Plated Body, for TCC Cable Group L1

## 19-05L2-TGN



SMA Female Crimp, Teflon Insulation, Gold Plated Pin, Nickel Plated Body, for TCC Cable Group L2

## 19-05S1-R-TGN



SMA Female Crimp, Teflon Insulation, Gold Plated Pin, Nickel Plated Body, Reverse Thread, for TCC Cable Group S1

## 19-05S1-RP-TGN



SMA Female Crimp, Teflon Insulation, Gold Plated Pin, Nickel Plated Body, Reverse Polarity, for TCC Cable Group S1

## 19-05T-TGN



SMA Female Crimp, Teflon Insulation, Gold Plated Pin, Nickel Plated Body, for TCC Cable Group T

## 19-13-2-TGN



SMA Female 4 Hole Panel Mount, Teflon Insulation, Gold Plated Pin, Nickel Plated Body

## 19-13-EX-TGN



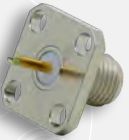
SMA Female 4 hole Panel Mount, Teflon Insulation, Gold Plated Pin, Nickel Plated Body, Soldering, Extender Post

## 19-13-RP-TGN



SMA Female 4 holes Panel Mount, Teflon Insulation, Gold Plated Pin, Nickel Plated Body, Soldering, Reverse Polarity

## 19-13-TGN



SMA Female 4 hole Panel Mount, Teflon Insulation, Gold Plated Pin, Nickel Plated Body

## 19-16-1-TGN



SMA Female Bulk-head Rear Mount, Teflon Insulation, Gold Plated Pin, Nickel Plated Body, Soldering

## 19-16-R-TGN



SMA Female Bulk-head Mount, Teflon Insulation, Gold Plated Pin, Nickel Plated Body, Reverse Thread, Soldering

## 19-16-TGN



SMA Female Bulkhead Mount, Teflon Insulation, Gold Plated Pin, Nickel Plated Body, Soldering

## 19-17-85-TGN



SMA Female 2 hole Panel Mount, Teflon Insulation, Gold Plated Pin, Nickel Plated Body, Crimp

## 19-17-EX-TGN



SMA Female 2 hole Panel Mount, Teflon Insulation, Gold Plated Pin, Nickel Plated Body, Soldering, Extender Post

## 19-17-TGN



SMA Female 2 hole Panel Mount, Teflon Insulation, Gold Plated Pin, Nickel Plated Body, Soldering

## 19-19-TGN



T-Adapter, SMA Female to SMA Male to SMA Female, Teflon Insulation, Gold Plated Pin, Nickel Plated Body

## 19-20-TGN



Adapter, SMA Male to SMA Female, Teflon Insulation, Gold Plated Pin, Nickel Plated Body, Right Angle

# SMA

# 19 SERIES

## 19-22-1-TGN



Adapter, SMA Male to SMA Male, Teflon Insulation, Gold Plated Pin, Nickel Plated Body

## 19-23-TGN



Adapter, SMA Female to SMA Female, Teflon Insulation, Gold Plated Pin, Nickel Plated Body

## 19-24-1-TGN



Adapter, SMA Male to N Male, Teflon Insulation, Gold Plated Pin, Nickel Plated Body

## 19-25-1-TGN



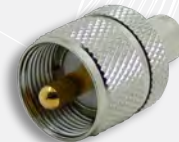
Adapter, SMA Male to N Female, Teflon Insulation, Gold Plated Pin, Nickel Plated Body

## 19-25-RP-TGN



Adapter, SMA Male Reverse Polarity to N Female, Teflon Insulation, Gold Plated Pin, Nickel Plated Body,

## 19-26-TGN



Adapter, SMA Male to UHF Male, Teflon Insulation, Gold Plated Pin, Nickel Plated Body

## 19-27-TGN



Adapter, SMA Male to UHF Female, Teflon Insulation, Gold Plated Pin, Nickel Plated Body

## 19-28-TGN



Adapter, SMA Male to BNC Male, Teflon Insulation, Gold Plated Pin, Nickel Plated Body

## 19-29-TGG



Adapter, SMA Male to BNC Female, Teflon Insulation, Gold Plated Pin, Gold Plated Body

## 19-29-TGN



Adapter, SMA Male to BNC Female, Teflon Insulation, Gold Plated Pin, Nickel Plated Body

## 19-30-TGN



Adapter, SMA Male to TNC Male, Teflon Insulation, Gold Plated Pin, Nickel Plated Body

## 19-31-1-TGN



Adapter, SMA Male to TNC Female, Teflon Insulation, Gold Plated Pin, Nickel Plated Body

## 19-32-TGN



Adapter, SMA Male to Mini-UHF Male, Teflon Insulation, Gold Plated Pin, Nickel Plated Body

## 19-33-TGN



Adapter, SMA Male to Mini-UHF Female, Teflon Insulation, Gold Plated Pin, Nickel Plated Body

## 19-34-1-TGN



Adapter, SMA Female to N Male, Teflon Insulation, Gold Plated Pin, Nickel Plated Body

## 19-35-1-TGN



Adapter, SMA Female to N Female, Teflon Insulation, Gold Plated Pin, Nickel Plated Body

## 19-36-TGN



Adapter, SMA Female to UHF Male, Teflon Insulation, Gold Plated Pin, Nickel Plated Body

## 19-37-TGN



Adapter, SMA Female to UHF Female, Teflon Insulation, Gold Plated Pin, Nickel Plated Body

# 19 SERIES

# SMA

## 19-38-TGN



Adapter, SMA Female to BNC Male, Teflon Insulation, Gold Plated Pin, Nickel Plated Body

## 19-39-TGN



Adapter, SMA Female to BNC Female, Teflon Insulation, Gold Plated Pin, Nickel Plated Body

## 19-40-TGN



Adapter, SMA Female to TNC Male, Teflon Insulation, Gold Plated Pin, Nickel Plated Body

## 19-41-3-TGN



Adapter, SMA Female to TNC Female, Teflon Insulation, Gold Plated Pin, Nickel Plated Body

## 19-42-TGN



Adapter, SMA Female to Mini-UHF Male, Teflon Insulation, Gold Plated Pin, Nickel Plated Body

## 19-43-1-TGN



Adapter, SMA Female to Mini-UHF Female, Teflon Insulation, Gold Plated Pin, Nickel Plated Body

## 19-48-TGG



SMA Female PCB Mount, Teflon Insulation, Gold Body